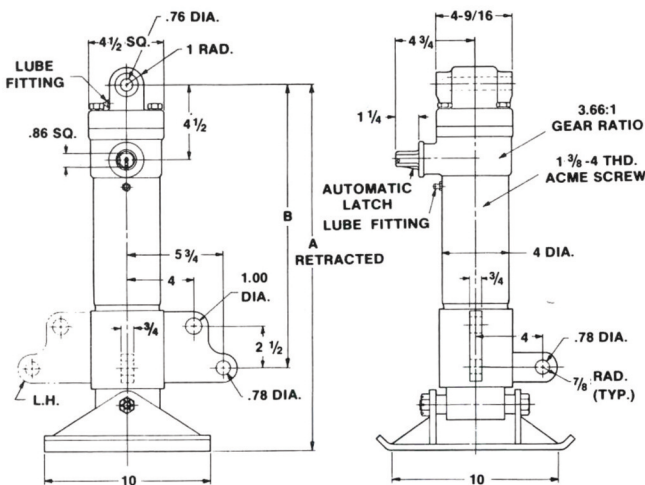


## 31000 SERIES JACKS

Seven basic models that meet most every lifting requirement up to 10,000 pounds.

### FEATURES:

1. **VERSATILE** ... jacks can operate vertically or horizontally to raise, lower or push your load. Units requiring tension load capability are available on special application.
2. **COMPACT** ... single package unit does away with cylinders or other space consuming arrangements.
3. **COMPLETE PROTECTION OF SCREW AND CRITICAL PARTS** ... by inner and outer tube enclosure. Round tubes in 10,000 lb. models assure precision fit and extreme mounting rigidity. Other models have square tube construction. Special tube locks available where side movement must be completely eliminated.
4. **AUTOMATIC LATCH AND SELF-LOCKING DESIGN** ... provides double safety against rotation of jack screw under vibration or extreme loading conditions. No need for brakes or expensive locking devices. Automatic latch is standard in 7,500 lb. and 10,000 lb. models. Latch actuates when crank handle is removed from assembly.
5. **CAN TAKE SIDE LOADS** ... resulting from uneven terrain, off-center loading, and eccentric mounting methods.
6. **HIGH EFFICIENCY BEVEL GEAR HEADS** ... with 3:1 or 3.66:1 gear ratios in 5,000 lb., 7,500 lb., and 10,000 lb. models. Gearheads have precision tapered thrust bearings, steel or bronze driveshaft bushings, large lubricant reservoir. 500 lb. and 1,800 lb. models operate on direct screw drive.
7. **STOWABLE** ... solves ground clearance problems. Trunnion mount 31000 and 31020 models swing up and out of the way ... are easily attached to trailer in the horizontal position.
8. **CORROSION-RESISTANT FINISH** ... all jacks are treated with protective phosphate to Mil-P-16232 and are prime painted with red oxide per Mil-TT-P-636. All hardware is zinc or cadmium plated.



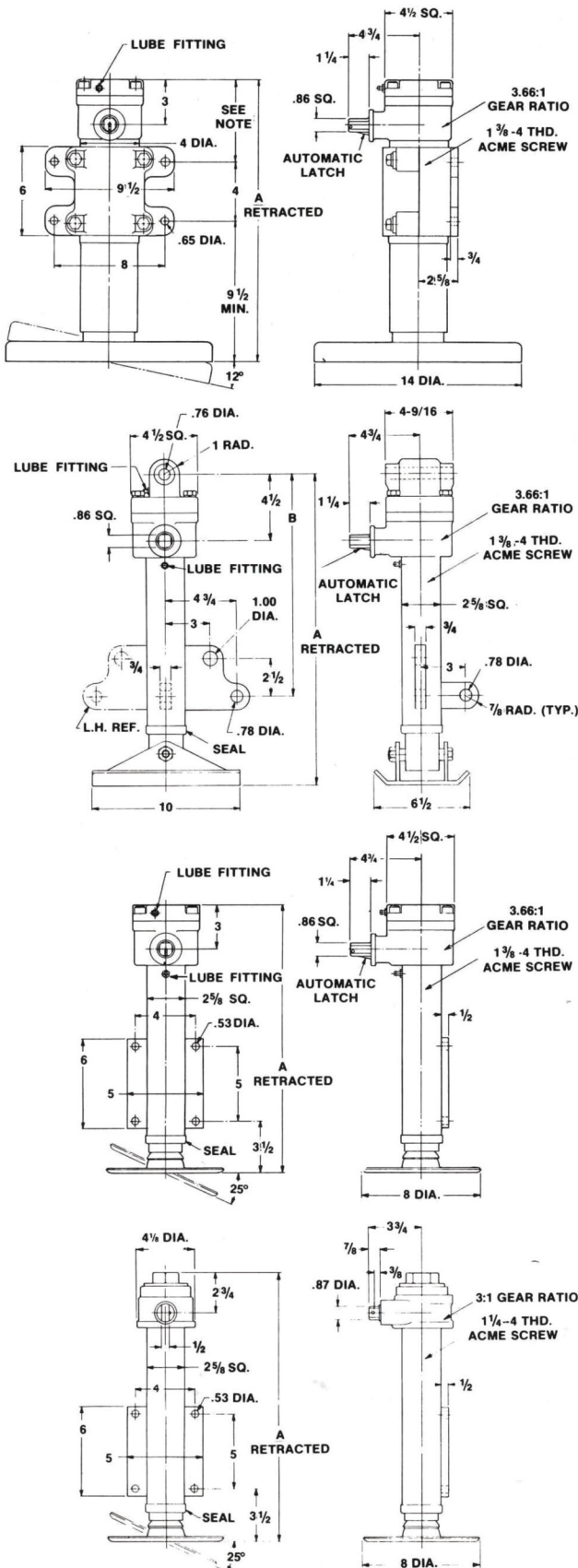
### 10000 LBS. CAPACITY — STOWABLE

PART NO.	STROKE	A	B	*SIDE LOAD LB.	WGT.
31000-6 L or R	6	22	17	11600	71
31000-12 L or R	12	28	23	7000	83
31000-18 L or R	18	34	29	5000	95

**NOTE:** \*Maximum static side load to yield, combined with maximum operating load. Unit must be securely fixed at connecting points.

### BASIC DATA:

1. 14.6 revs. input for 1 inch of stroke.
2. 10,000 lb. maximum operating load, compression.
3. 25,000 lb. maximum static compression to yield.
4. Approx. 380 inch lb. torque input at maximum operating load.
5. Specify crank: 8 inch, Part No. 10582-K or 12 inch, Part No. 10582-M.



### 10000 LBS. CAPACITY — RIGID MOUNT

PART NO.	STROKE	A	*SIDE LOAD LB.	WGT.
31010-6	6	19	6300	86
31010-12	12	25	3600	98
31010-18	18	31	2500	110

**NOTE:** \*Maximum static side load to yield, combined with maximum operating load. Unit must be securely fixed at mounting point of jack side plate to frame member.

Adjustable clamp bracket may be adjusted along entire length of tube toward gear head on -12 to -18 models. As a precaution it is advisable to weld bracket to outer tube, on all units, after location of proper mounting height is determined to prevent possible slippage.

**BASIC DATA:**

- 14.6 revs. input for 1 inch of stroke.
- 10,000 lb. maximum operating load, compression.
- 25,000 lb. maximum static compression to yield.
- Approx. 380 inch lb. torque input at maximum operating load.
- Specify crank: 8 inch, Part No. 10582-K or 12 inch, Part No. 10582-M.

### 7500 LBS. CAPACITY — STOWABLE

PART NO.	STROKE	A	B	*SIDE LOAD LB.	WGT.
31020-6 L or R	6	21	15	850	45
31020-12 L or R	12	27	21	500	52
31020-18 L or R	18	33	27	400	59

**NOTE:** \*Maximum static side load to yield, combined with maximum operating load. Unit must be securely fixed at connecting points.

**BASIC DATA:**

- 14.6 revs. input for 1 inch of stroke.
- 7,500 lb. maximum operating load, compression.
- 22,000 lb. maximum static compression to yield.
- Approx. 285 inch lb. torque input at maximum operating load.
- Specify crank: 8 inch, Part No. 10582-K or 12 inch, Part No. 10582-M.
- Available with 14" dia. all terrain foot pad. Specify Part No. 31022-6 etc.

### 7500 LBS. CAPACITY — RIGID MOUNT

PART NO.	STROKE	A	*SIDE LOAD LB.	WGT.
31030-6	6	18	1100	45
31030-12	12	24	600	52
31030-18	18	30	400	59

**NOTE:** \*Maximum static side load to yield, combined with maximum operating load. Unit must be securely fixed at mounting point of jack side plate to frame member.

**BASIC DATA:**

- 14.6 revs. input for 1 inch of stroke.
- 7,500 lb. maximum operating load, compression.
- 22,000 lb. maximum static compression to yield.
- Approx. 285 inch lb. torque input at maximum operating load.
- Specify crank: 8 inch, Part No. 10582-K or 12 inch, Part No. 10582-M.

### 5000 LBS. CAPACITY — RIGID MOUNT

PART NO.	STROKE	A	*SIDE LOAD LB.	WGT.
31040-6	6	18	1100	35
31040-12	12	24	600	42
31040-18	18	30	400	49

**NOTE:** \*Maximum static side load to yield, combined with maximum operating load. Unit must be securely fixed at mounting point of jack side plate to frame member.

**BASIC DATA:**

- 12 revs. input for 1 inch of stroke.
- 5,000 lb. maximum operating load, compression.
- 15,000 lb. maximum static compression to yield.
- Approx. 235 inch lb. torque input at maximum operating load.
- Furnished with 8 inch crank, Part No. 14168-4.